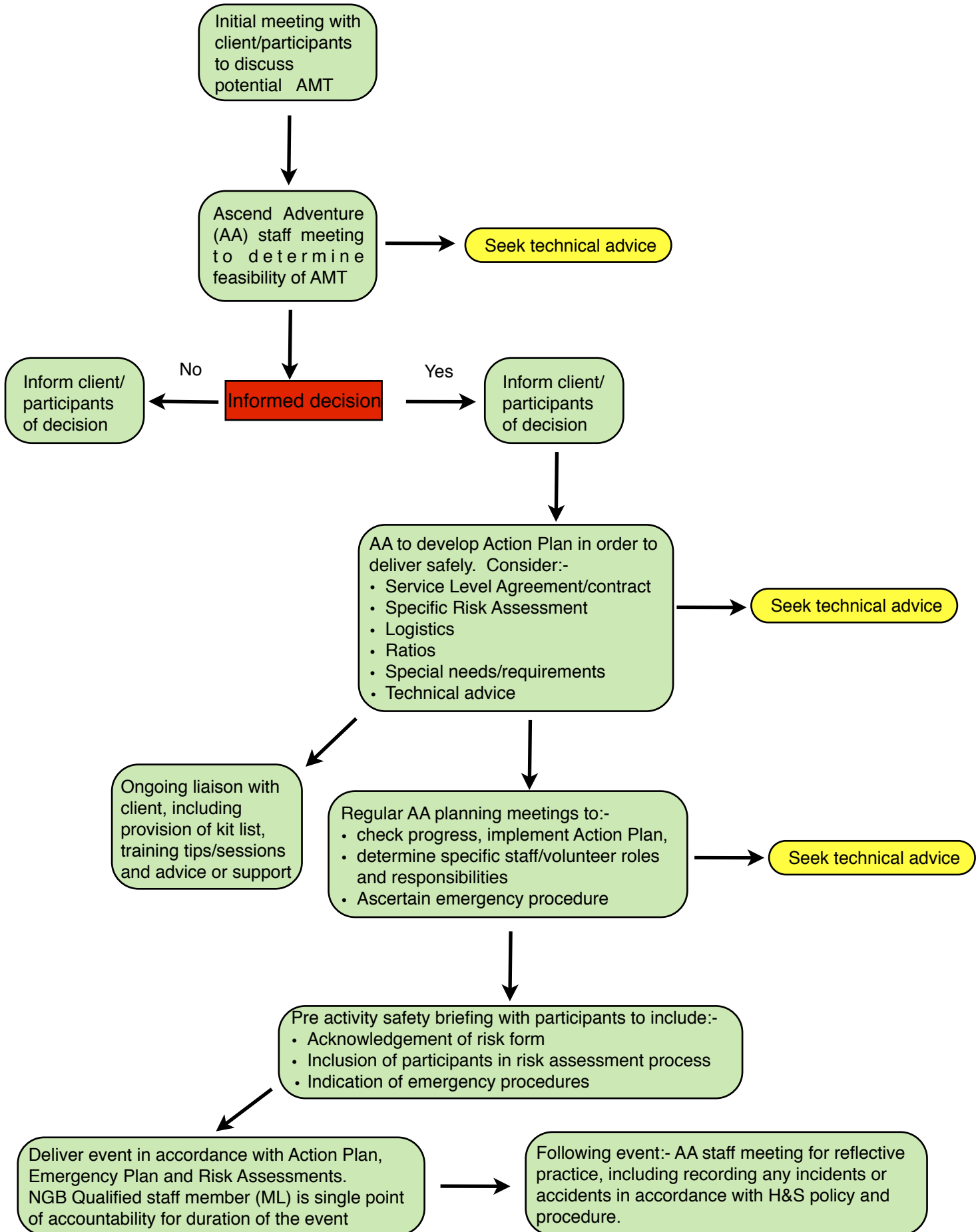




Operating Procedures- Activities in Mountainous Terrain (AMT) Flow Chart



Operating Procedure

Instructors will be trained, assessed and deemed competent before leading any activity session. NGB qualifications will be required and verified via a telephone/email check with the relevant governing body.

Sessions should be concerned with the development of skills and outcomes specific to the course as designed, but must primarily be safe and, where practicable, enjoyable. Sessions will be flexible according to specific needs and abilities of participants.

Responsibility for safety during and activity session lies with the instructor designated to conduct each activity.

The responsibility for individual clients remains with the visiting group leader who is obliged to withdraw them from an activity if they become concerned for the safety of their charges. A group leader will sign a group acknowledgement of risk form.

If parents, guardians or group leaders are present they retain responsibility for their children. In all other cases the instructor is in loco parentis, which means they have to take responsibility as would be expected of a careful parent.

Consent forms will be obtained from the parent or guardian of unaccompanied young people for whom the Ascend Adventure staff member is in loco parentis.

Ascend Adventure staff have the authority to alter the duration or location of any activity if, in their judgement, it becomes necessary to do so. Should it become necessary to cancel or shorten any activity session, responsibility for the group remains with the designated instructor who must take appropriate action to ensure that a suitable alternative activity is organised.

A member of staff with appropriate First Aid Training will be present at all times during activities. Ascend Adventure recognizes its responsibilities under the Health and Safety (FIRST AID) Regulation 1981, SI 1981/917

Activity Emergency Procedures

Dynamic risk assessment by Ascend Adventure staff will determine:-

Can the emergency be dealt with at the scene?

If yes, treat and continue activity or return to base.

If no,

- contact the emergency services
- stay with the group until help arrives